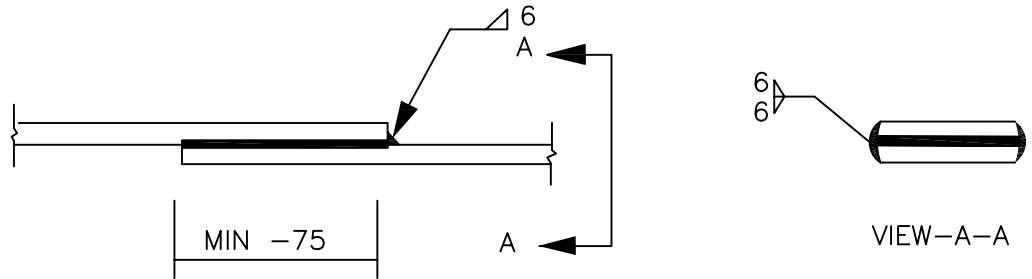
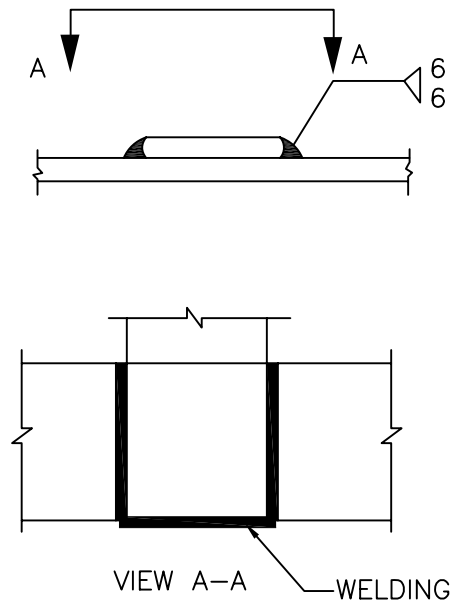


C. STRIP TO STRIP (50X6 MS FLAT)

1. STRAIGHT LAP JOINT/RISER



2. CROSS LAP JOINT



EQUIPMENT EARTHING DETAILS WELDING DETAILS

COMPUTERREF.NO.

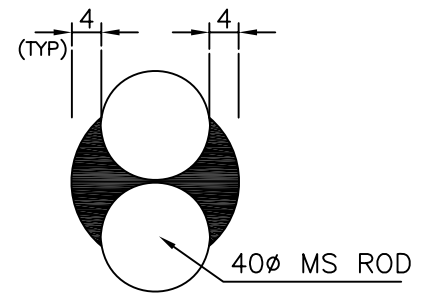
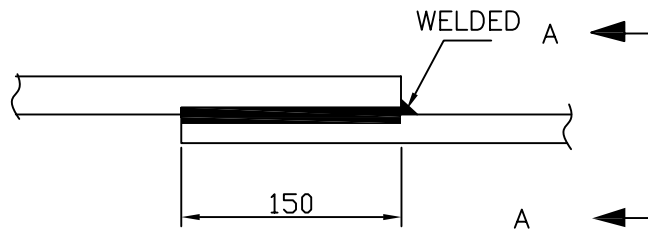
DRG. No. C-ENG-STD-001

REV. 01

SHEET No.
1

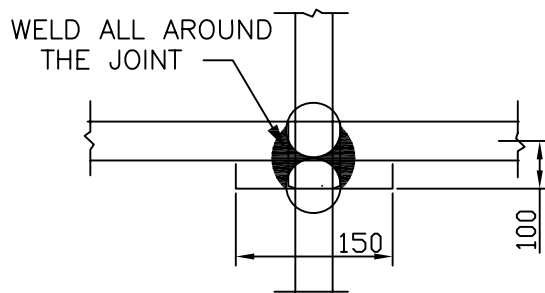
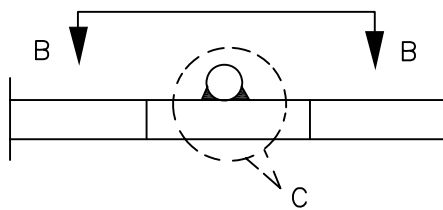
ROD TO ROD

1. STRAIGHT LAP JOINT/RISER

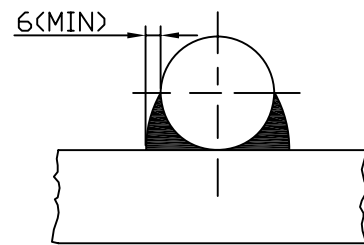


VIEW A-A

2. RIGHT ANGLED JOINT

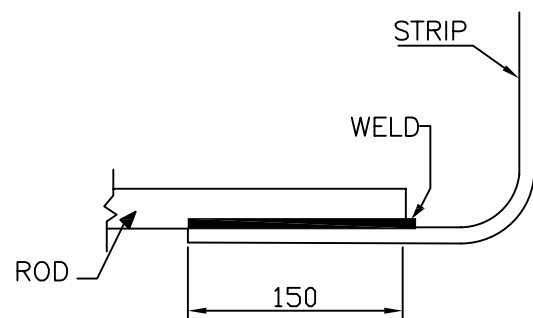
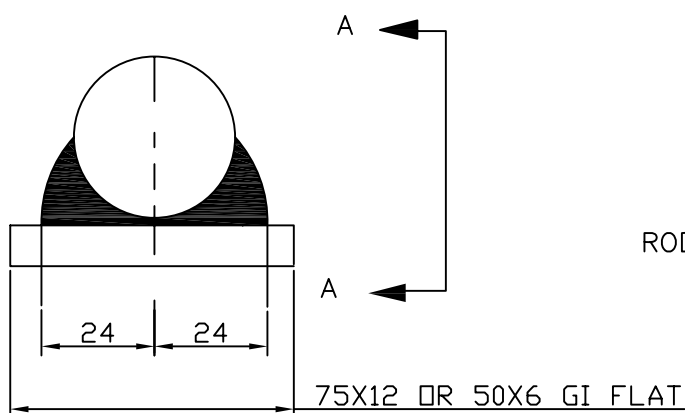


VIEW B-B



VIEW C

3. ROD TO STRIP



VIEW A-A

REF: POWER GRID DRG.: C-ENG-STD-001 (EARTHING DETAILS)



EQUIPMENT EARTHING DETAILS
WELDING DETAILS

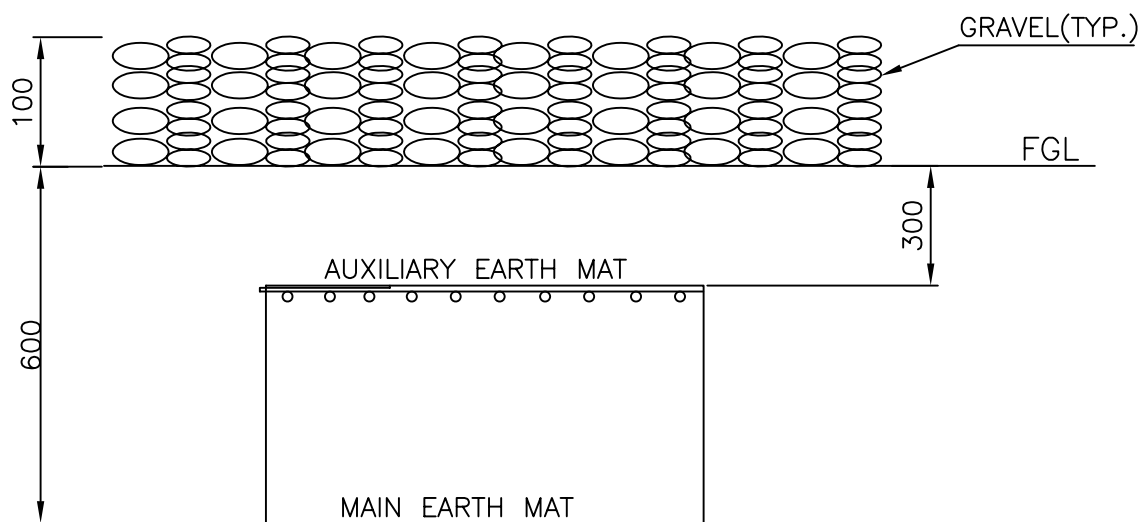
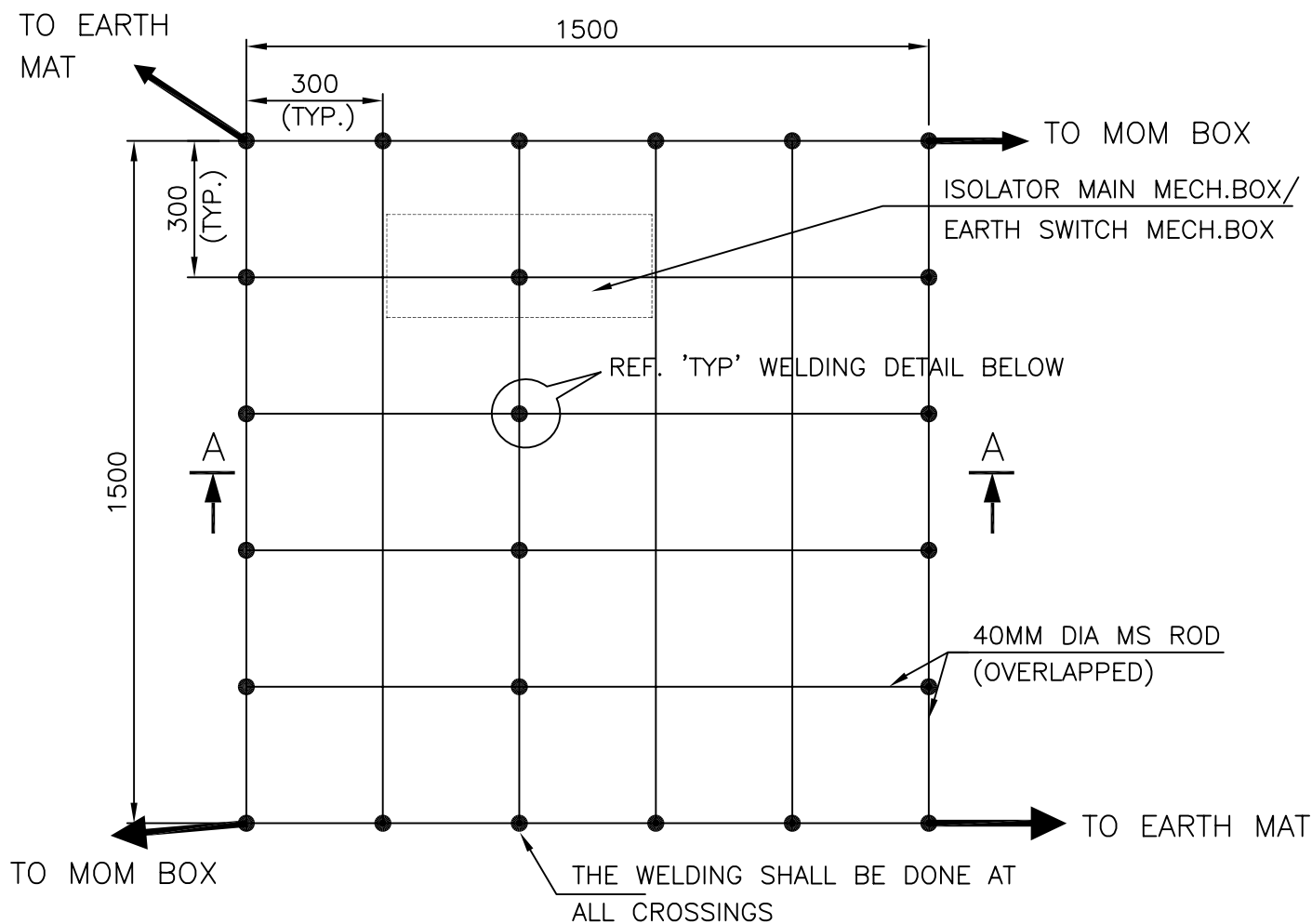
COMPUTERREF.NO.

DRG. No.

C-ENG-STD-001

REV. 01

SHEET No.
2



SECTION AA

NOTE:

AUX. EARTH MAT SHALL BE SO POSITIONED THAT THE FOOT OF THE OPERATOR ALWAYS LIE OVER THE AUX. EARTH MAT AREA WHILE ATTENDING / OPERATING THE MECH. BOX THE CABLE TRENCH ROUTING SHALL BE PLANNED ACCORDINGLY.



EQUIPMENT EARTHING DETAILS

AUXILIARY EARTH MAT FOR ISOLATOR MAIN MECH., E/S MECH. BOX & CB (TYP.)

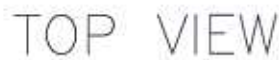
COMPU. DRG. REF.

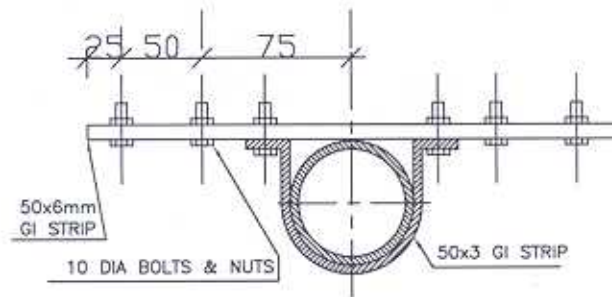
Report No.

TB-4-275-509-007-A/00

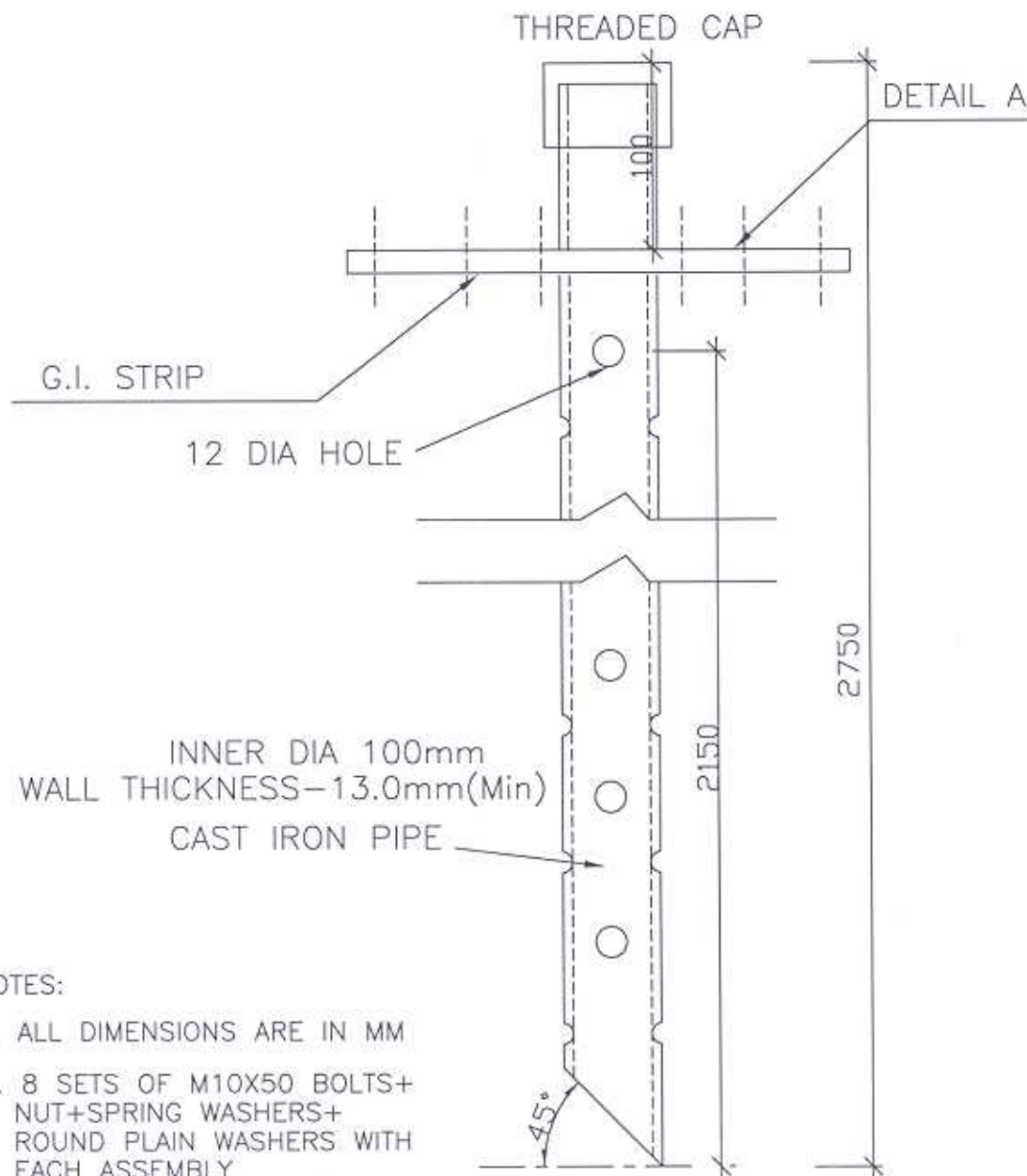
SHEET No.

1-11





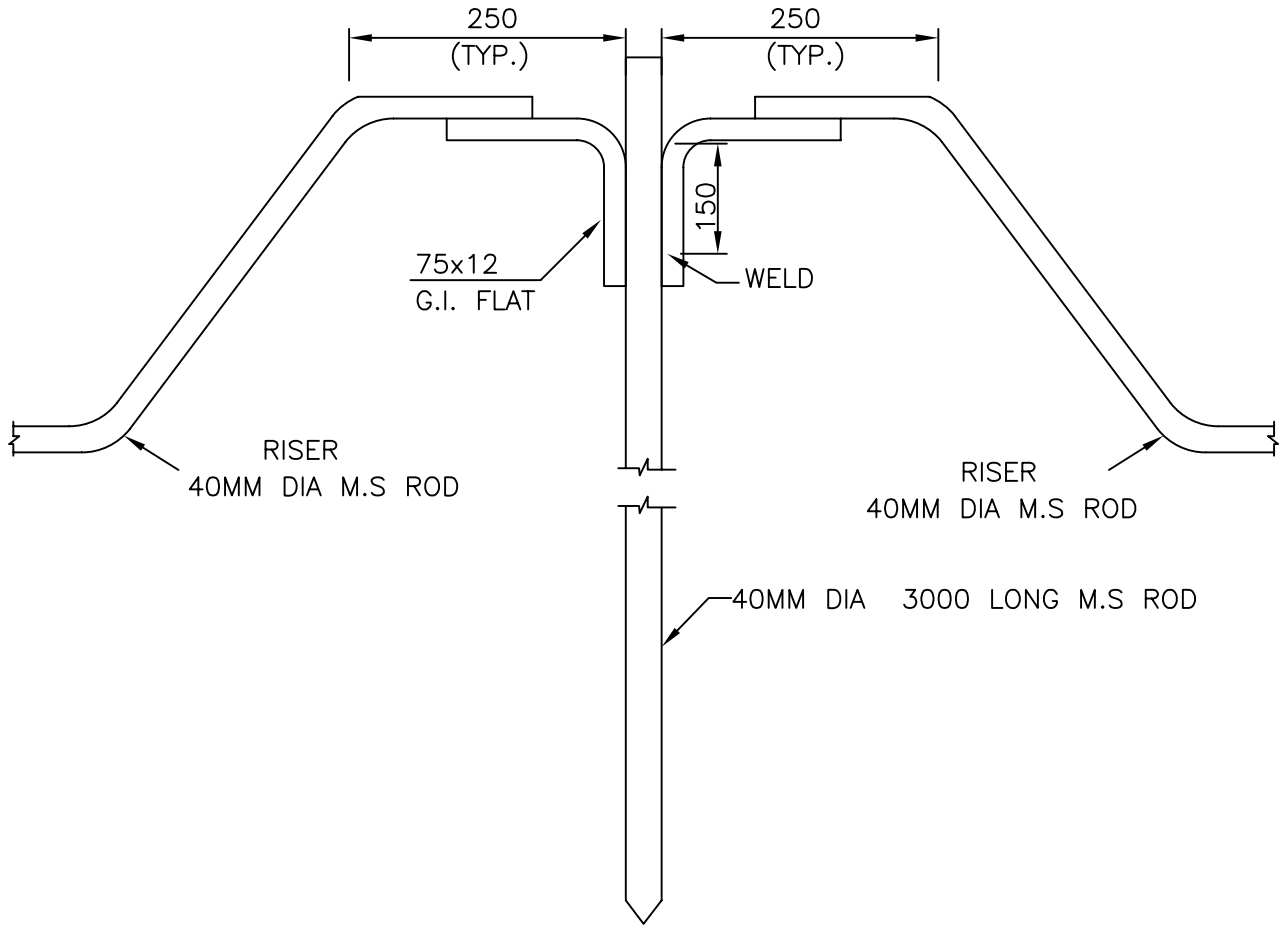
DETAIL A



NOTES:

1. ALL DIMENSIONS ARE IN MM
2. 8 SETS OF M10X50 BOLTS+
NUT+SPRING WASHERS+
ROUND PLAIN WASHERS WITH
EACH ASSEMBLY

CAST IRON PIPE ELECTRODE
SKETCH SK-2



NOTE:—

1. TO BE USED FOR CONNECTING NEUTRAL OF CVT AND SURGE COUNTER OF LA AND ALONG THE PERIPHERY OF THE SWITCHYARD.



EQUIPMENT EARTHING DETAILS

ROD EARTH ELECTRODE WITHOUT TEST PIT